

MATERIALE: 19mm MDF - transmission walls  
25mm MDF - cabinet and base

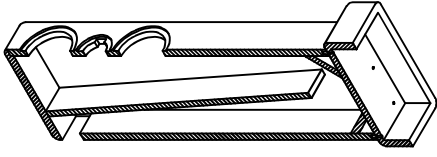
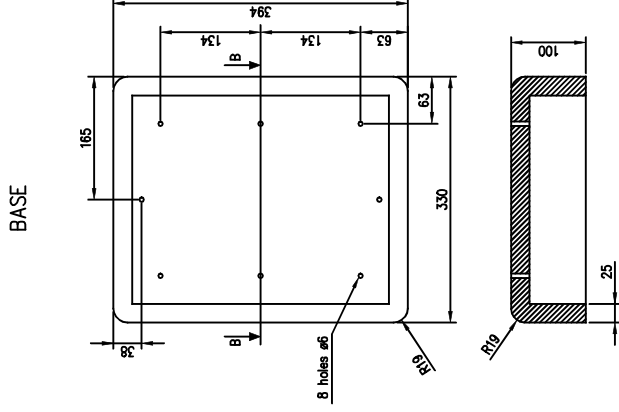
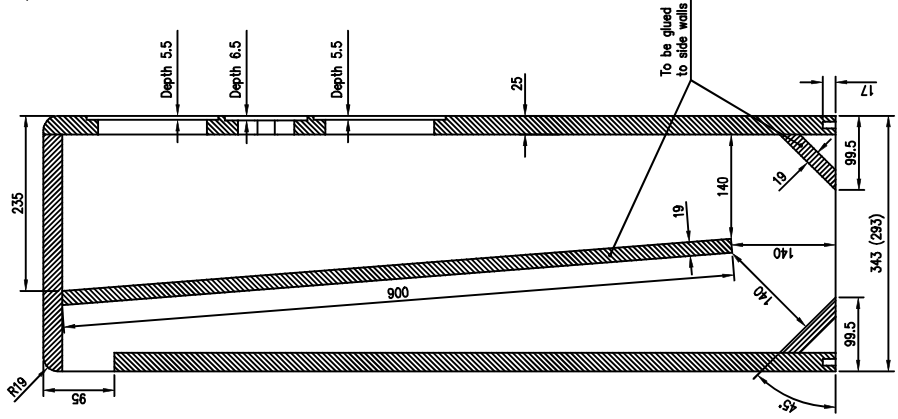
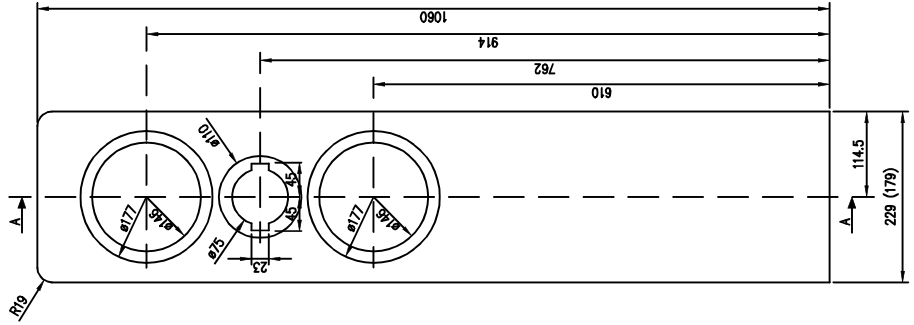
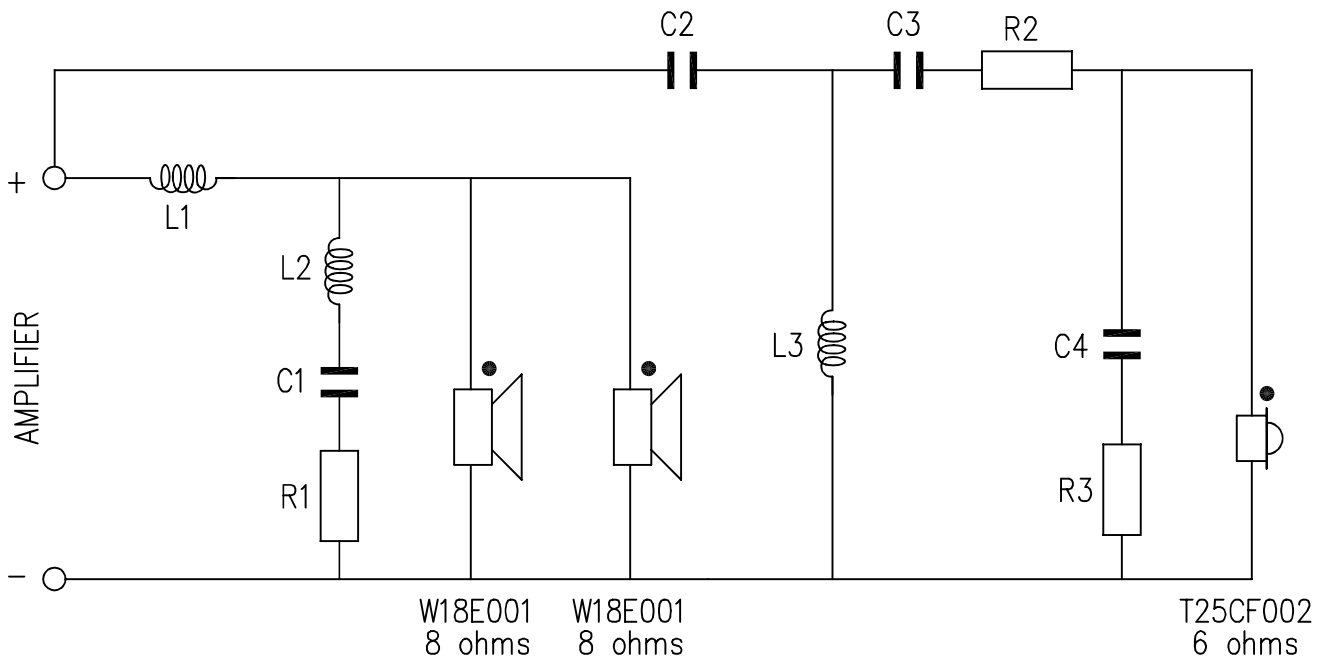


Fig		Anzahl		Benennung		Nr.		Tegn.nr.		Metr.		Bemerkung	
				Barenneise		Sign.		Date		02.01.2001		T.J.	
		Tegnet		Kontrolert		Godkjent		Målestokk		1:5		K00218	
												CABINET THOR	
												SEAS FABRIKKER A.S.	
												Erstatning for:	
												Erstatning nr:	

# CROSSOVER NETWORK for THOR and ODIN Mk3



COILS	CAPACITORS	RESISTORS
L1=1,00mH - ø1.63mm (#14AWG)	C1 = 8,2µF	R1 = 0,5 ohms
L2=0,15mH - ø0,81mm (#20AWG)	C2 = 8µF	R2 = 2,0 ohms
L3=0,24mH - ø0,81mm (#20AWG)	C3 = 18µF	R3 = 12,5 ohms
Air-core	C4 = 2,2µF	Metalic oxide or non-inductive wire wound
	Polypropylene or polyester foil	

ESC End

D S A Frequency Response

Mag i 03.07.101 09:41

Distance Loudsp.- Mic.: 104.6cm dB SPL normalised on 1 Meter Delay: 3.1ms

M0: THOR

